

The Northwest Recap



Who digs Cranes?

Everything you wanted to know about raising stuff, but didn't know how to ask.

...and what else is getting a lift?

Portland Econ Indicators see page 8

Check out Walt's latest State of Things.

Page 5



OMNI Search

A keyword search that searches every spec page of every project in seconds and results are instant, or you can set up OMNI Auto Search and get your results delivered each morning to your email inbox.



CPC | CONTRACTOR PLAN CENTER, Inc.

5468 SE International Way
Milwaukie, OR 97222
503.650.0148
www.contractorplancenter.com

Certified WBE 1042

Upcoming Events

August 19 - Program:
A must see!
Page 3.

Check out other Construction Industry Related Organizations:

ASPE groups on LinkedIn.com
www.linkedin.com/groups/American-Society-Professional-Estimatorsnational-group-750797/about

A/E/C Industry Networking Group on LinkedIn.com
www.linkedin.com/groups/E-C-Industry-Networking-Group-46976/about

AACE Cascade - www.aacei-cascade.org/

CSI Portland - www.portland.csinet.org/
Check out CSI Regional Conference

NAWIC - <http://www.nawicportland54.org/>

Volume 24 | Issue 8 | August 2014

IN THIS EDITION OF THE RECAP:

Chapter's Message	p 2
August Program	p 3
Walt's Ramblings	p 5
Job Hotline	p 6
Recap of Portland Indicators	p 8



Welcome Hester!

Its bid day, you're scrambling. Phone is ringing off the hook...you look at the I.D. trying to decide if you can let it go to voicemail while you finish this one little take off. You take it and get wrangled into a 10 minute conversation about the next bid... the one you haven't even opened the prints for... meanwhile precious minutes are ticking off till you have to get THIS bid out the door.

This was my morning. As I'm sure you can all relate to mornings like this. During that 10 minute conversation I got the reminder email from Curt Kohler that he and Samantha needed this message so they could wrap up this month's chapter newsletter.

Oh dear, I'd forgotten! It had simply slipped my mind that I was stepping into new shoes this month. I'm taking over the role that Chana Frederick has vacated. Oh gosh, do I have time? Do any of us? How did Chana do it? How do we manage?

With our phones in our hands 18 hours a day. At least that is how I do it! Even as I race through this greeting my freshly canned green beans are cooling down in the pressure cooker. Multi-tasking at its peak!

Thank you Chana for leading the chapter for the past two years! You're not going far, just slipping into the hat of previous past president to help sort through this transition. Thank you Steve Clapp for staying in the chain and moving to 1st vice president and the rest of the board for remaining active in the roles you had last year... Robert Rivera handling finances, Mike Flynn keeping track of our actions and recording them as secretary, the invaluable Curt Kohler leading programs chair and Jared Carkin reigning in the membership chair. We are all busy with our daily lives, but we carve out a few (and I mean just a few) hours a month in order to keep this chapter active in our community. Samantha Jordan with Emerick Construction also carves out a few hours a month putting together this wonderful, informative newsletter and keeps our website ready to go!

Thank you, thank you all!

I look forward to seeing you August 19th at our program.

Hester Troutman, CPE
Incoming Chapter 54 President

Officers and Chairs

Columbia Pacific 2014 - 2015

President

Hester Troutman, CPE
(503) 535-2637 hester@oregon-electric.com

1st Vice President

Steve Clapp, CPE
(503) 953-4425 steve_clapp6501@outlook.com

2nd - Vice President

Position Open!

Secretary

Mike Flynn, CPE
(971) 279-5002 mikeflynn1730@comcast.net

Treasurer

Robert Rivera, C
(503) 846-7849 rivera@co.washington.or.us

Past President

Chana Frederick, CPE
(971) 832-3944 frederick.chana@gmail.com

Membership

Jared Carkin, E
(503) 209-6048 JaredC@hydrotempmech.com

Programs/ Newsletter Editor

Curt Kolar, CPE
(503) 962-8840 kolarc@trimet.org

Certification

Chana Frederick, CPE
(971) 832-3944 frederick.chana@gmail.com

Publisher

Samantha Jordan
(503) 777-5531 samanthaj@emerick.com

Advertising

Steve Clapp, CPE
(503) 953-4425 steve_clapp6501@outlook.com

Chapter General

Chana Frederick, CPE
(971) 832-3944 frederick.chana@gmail.com

Chapter General

PO Box 6661 Portland, OR 97228-6661
aspechapter54@gmail.com
aspe54.org



**For more information,
please visit ARC's
website or call today:**

**Phone: (503) 227-3424
www.e-arc.com**



July Program

Estimating for and with Cranes

Everything you wanted to know about raising stuff, but didn't know how to ask

Featuring

Mike Teeter & John Mitcham • Ness & Campbell Crane, Inc.

When: Tuesday August 19, 2014

Social Time – 5:30pm • Dinner & Program 6:15pm

Where: University Place • 310 SW Lincoln, Portland

***Free parking – go to the hotel lobby and say that you are with ASPE ***

Ness & Campbell Crane (aka NC) exclaims that it provides the largest fleet of cranes and alternative lifting equipment to the Pacific Northwest (has anyone disputed this yet?) and it has been delivering these services since 1947. Mike and John will present exciting local use of cranes in the Portland Metro area and how to prepare and estimate for lifting and hoisting applications.

Join us as we get properly schooled on what to look for, what to look out for, and how to plan for mobilization of a crane for you next project. Plus as a bonus, learn about costs for closing sidewalks and streets – something we tend to forget about!

**** This educational program qualifies for 1 CED hour for Oregon CCB license renewal ****

Meeting Cost: \$35.00 with Reservation & Credit Card payment*

\$45.00 via check at the door • Ask about Special Student Rates

***Reservation Deadline: Noon, Wednesday, August 13**

Includes Dinner – Meal is guaranteed only with reservation For Reservations: <http://aspe54.org>

If this does not take you to it, then look for, and click on, "August Program Meeting"

Questions or special circumstances: contact Curt Kolar 503-962-8840 kolarc@trimet.org

Cancellations: (see The Fine Print below)

The Fine Print: if you reserve (online or otherwise) and do not attend and have pre-paid, thank you for your donation to our Society! OR you July send someone to the event in your place. No-show reservations not pre-paid, will be invoiced \$45.00 PLUS a \$15.00 processing fee.

For known or potential special circumstances, contact Curt Kolar immediately.

Register Today: <http://aspe54.org>



interiorTech



crawfordDoor

Your First Choice In Building Accessories Serving Oregon & Washington since 1947

LIVELY FIRE / SMOKE / EGRESS OPTIONS
VIBRANT ARRAY OF DAYLIGHTING CONTROL SYSTEMS
DYNAMIC OPERABLE / CUSTOM DOORS & WHOLE PARTITIONS
COLOSSAL SELECTION OF SPECIALTIES & FURNISHINGS



Our Pledge:

We exist to meet the needs of our clients. We are committed to excellence by valuing our customers, providing quality products & services and exceeding expectations. We pledge our reputation to our clients, and we are determined to provide them the highest value for the construction dollars they spend. We are dedicated to Integrity, honesty and fairness.

Visit our Website: www.interior-tech.com And take a tour of our interactive Interior Tech City



Walt's Ramblings

As most of you know the ASPE National Convention was held in July in Indianapolis. I thought I would start off by giving you all some behind the scenes information regarding the status of ASOE. I know Chana was planning on providing some additional information based on her attendance, so I will keep this short.

- Doyle Phillips, FCPE, is the new president. I have known Doyle for several years since I have been a member of the BOT. He is very big on education. Just for information, he started out in the field as a tradesman, was brought into the office as a white collar person. He decided that office was better than field and felt an education would help him. He got his BS and then went on for a Masters. He is currently working on a Doctorate. Doyle is not a young chicken. To be able to pursue the education, work full time, support his family and maintain his sanity is a tribute to his passion for the profession. Since he is a believer in education, he has formed a new committee devoted to working with higher education and even into the high school level to promote construction estimating as a career. The Society has already 5 chapters

(2 from the NW) working with CEM programs along that line of thinking. We as a profession must work to promote the benefits of construction estimating to the current CEM students. Likewise, we must promote the idea of CEM to high school students. If we don't, no one else will.

- The new ASPE SEP manuals are out for purchase. There are 3 "packages" to choose from in purchasing this 9th edition. SBO and the national webpage have the pricing and document packages.
- The 5 chapters mentioned above are also promoting the use of the SEP in the construction estimating classes. This work is great for two reasons:
 - o One it lets the students and the CEM programs know about ASPE. You all would be surprised how many instructors, students (and estimators) still do not know about ASPE. By promoting the SEP these folks become aware of the Society and what it can do for them professionally should they chose an estimating profession.
 - o Two is that if the SEP is adopted by CEM programs,

Continued pg 7

COMPETE SMARTER

Build your market share with DJC

- Qualified leads and bids
- Local construction, architecture and engineering news
- Trends, analysis and best practices
- Networking connections
- Easy online access + 156 newspapers



DJC
DAILY JOURNAL
OF COMMERCE

SUBSCRIBE TODAY!

Visit: djcoregon.com/ASPE2

Call: 1-800-451-9998 (X3JASPE)

Oregon's Building Connections



Save
13% OFF
the regular
rate!

Have something to share with the group? New project, job opportunities, certifications? Let us know and we will feature it in the newsletter. Contact: Samantha Jordan - samanthaj@emerick.com

Advertise With Us... Contact Steve Clapp, CPE, for information regarding business or special event ads stevec@emerick.com



"Job Hotline"



Position Sought

Senior General Contractor Estimator, proficient in project management. Resume and references provided upon request. Direct inquiries to Recap Editor, Curt Kolar, CPE 503-962-8840 kolarc@trimet.org

Estimator Positions Available

Direct inquiries to Walt Lemon, CPE Lifetime, ASPE NW Regional Governor 503-962-8840 walt@europa.com

**Interior-Tech /Crawford Door Hiring!!
Positions as of May 2014**

Estimator – Portland

This could be an entry level position but we would consider someone with significant experience a bonus. Estimating for all of our products and solutions is included in the job description and we would provide training as required.

Project Manager- Seattle

Reports to VP of Operations.

**Specialty Door Sales / Product Specialist-
Portland or Seattle**

Reports to Sales Manager

SPD Sales / Project Management- Portland

This is a new SPD position. It will be focused on a handful of clients, in Oregon to start with. Will report to VP – Operations.

Please send cover letter and resume (regardless of position) to: washingtonsales@interior-tech.com or oregonsales@interiortech.com

Website: www.interior-tech.com

Advertise With Us... Contact Curt Kolar, CPE, for information regarding business or special event ads kolarc@trimet.org

WHITAKER

CCB# 123833
7180 SW Sandburg St, Suite 400,
Tigard, OR 97223
p 503-768-3017, f 503-768-3018
Cell: 503-314-8005
bill@whitakerellis.com, BILL ELLIS, P.E

ELLIS



Over 71 years
of Distinction.
www.emerick.com
503-777.5531

**MADDEN
FABRICATION**

2550 NW 25th Place • Portland, Oregon 97210

Custom Metal Fabrication and Welding

Greg Madden Office (503) 226-3968
President Fax (503) 242-2446
E-mail: gadden@madfab.com Toll Free 1 (877) 902-6424



Walt Continued

the amount of revenue that will be generated for the ASPE treasury will be fantastic. This non-due revenue is vital to the operation of SBO and ASPE.

- Membership continues to be a challenge. Both in attracting new members and retention of the existing. The chapters must be involved in the “grass root” solution to this situation. The BOT and SBO can assist, sort of, but the main contract between ASPE and the membership and new members must come from the chapters. Members come in contact with estimators every day. It just takes a few minutes to tell the contract that, “Hey I would like to send you a link to a great Society that promotes education, ethics, networking and fellowship in the estimating profession. I would really appreciate it if you would take a minute to look at (the local chapter webpage and/or the National webpage). Ok????” You will be surprised at the number of positive responses you will get.
- Next year's convention will be in San Diego. In 2016 we will be in Tampa Bay, Fla. And in 2017 we will be in Boise, ID. There is an interesting reason why the BOT chose Boise. Stop me at the next meeting and I will give you the rundown.
- ASPE is quite healthy financially.

CHANGE SUBJECT

Just as a reminder, this is my last year as NW Governor. I term out in July of next year. I will be looking for a volunteer to step up to fill the gap. If interested contact me and I can fill you in on the duties, time commitment requirements and fun things you will get to be involved in.

CHANGE SUBJECT

Come September of 2015, I will also be cutting back on my part time consulting (just for fun) business. The industry has changed a lot in the 5 years I have been out of the hand phone booth combat, daily grind. It is sort of passing me by and that is the way it should be. Consequently, I will be bidding farewell to this column. I know that I have said this in the past, but this time it has got to be. I am sure that you all have heard my war stories numerous times and I can almost see you rolling your eyes and saying, “sure Lemon, tells us again how you won the war of you vs. the bad old (owner or architect or sub) in the winter of '76 before computers or BIM or smart phones or faxes.”

Anyway it has been a kick and I hope that every now and then some of my wise and/or stupid words have been some help.

*Thank you for listening / Walt Lemon, CPE (lifetime)
American Society of Professional Estimators
Chapter 54 | Northwest Governor*

Madden Industrial Craftsmen, Inc.
Contact: Ken Madden
1-800-308-6424

- Premier staffing service specializing in manufacturing and construction temporary staffing.
- Recognized leader in the Portland/Vancouver market for over 15 years...we're here to stay.
- Recipient of Austin Family Business Award; recognized in 2003 as one of Oregon's "Top 100 Best Companies to Work For".
- We're on your side! Give us a call to see how we can help.

“Let MICI Do It”



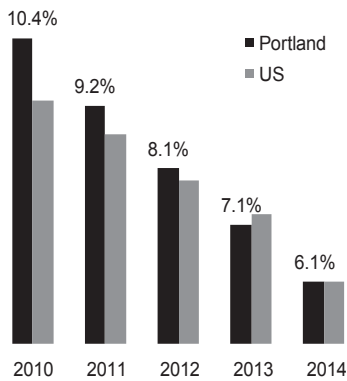


Recap of Portland Indicators

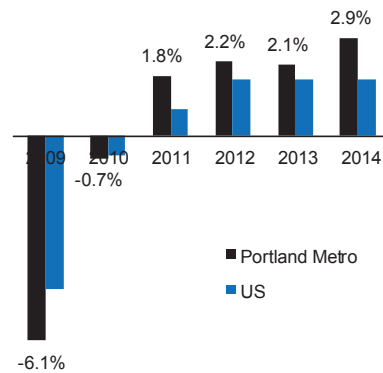
Portland Economic Indicators
June 2014



Unemployment Rate - Portland Metro
May 2010 - May 2014



Employment Growth - May 2014
Increase on a year earlier



Labor Trends

Recent years have seen a steady decline in the regional unemployment rate of three points in the last three years. Where the Portland region had an unemployment rate noticeably above the US rate in 2010 and 2011, our rate is now equal to the US rate.

The Portland region saw robust employment growth of 2.9 percent over the last 12 months. Portland's growth is noticeably faster than the US rate which has been stuck at 1.7 percent for the past three years.

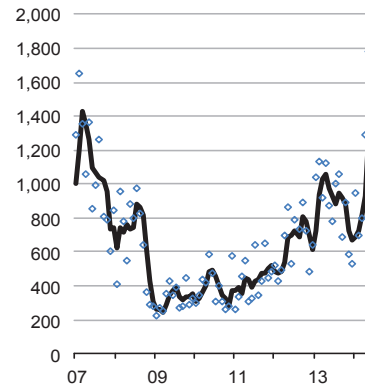
Real Estate Trends

After a weak 1st quarter in 2014, April and May permit numbers showed impressive growth, returning to prerecession levels. 1,780 permits were filed in May, a level we haven't seen since 2006.

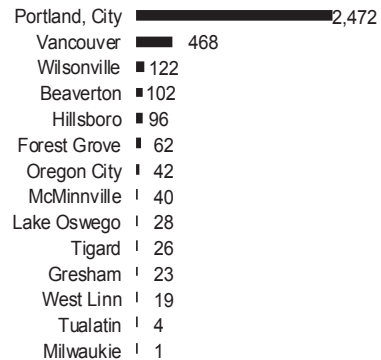
The surge in residential building permits is almost entirely due to a massive increase in planned apartment and condo projects in the city of Portland. In May, 62 percent of all permits in the region were multifamily projects in the city of Portland. Outside of the city of Portland, most communities are seeing a decrease in activity compared to last year.

So far in 2014, most cities in the region have yet to report a single planned apartment or condo project of more than 4 units, including: Hillsboro, Tigard, Gresham and every city in Clackamas County.

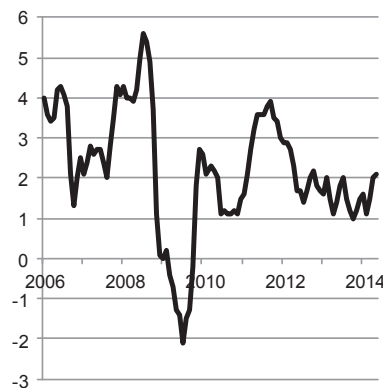
Residential Building Permits
Portland Metro Region - 3 month average



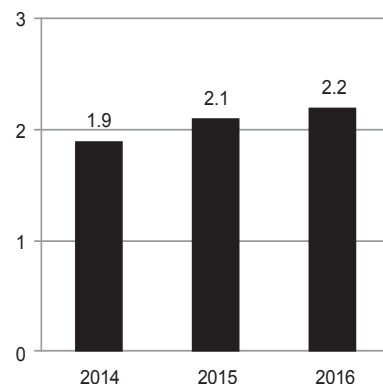
Residential Building Permits
First five months of the year



US Inflation Rate - Year over year
2006 through May 2014



US Inflation Forecast
Survey of Professional Forecasters
Federal Reserve Bank of Philadelphia



2013 Population Trends

The US inflation rate has averaged about 1.6 percent over the last two years. A mild increase in the last couple of months has renewed concern that inflation may pick up soon.

Every quarter, the Philadelphia Federal Reserve produces its Survey of Professional Forecasters. The survey provides the current conventional wisdom among economic forecasters about the outlook for the US economy. Currently, the thinking is that inflation may pick up slightly, while remaining close to 2 percent for the near future.

Check out the full report here :
www.philadelphiafed.org/research-and-data/

Want to join the distribution list?
Have questions? E-mail me!

Christian Kaylor
Christian.R.Kaylor@oregon.gov