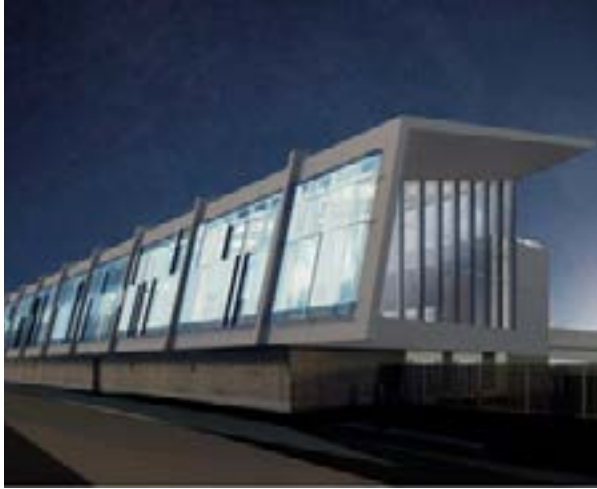




# The Northwest Recap



## PDX Concourse "E" Expansion

October Program

Page 3



## Fall Is Here

A message from the President

Page 2

## Why Become a Member

Page 7

**OMNI Search**

*A keyword search that searches every spec page of every project in seconds and results are instant, or you can set up OMNI Auto Search and get your results delivered each morning to your email inbox.*

**CPC** | CONTRACTOR PLAN CENTER, Inc.

5468 SE International Way  
Milwaukie, OR 97222  
503.650.0148  
www.contractorplancenter.com

Certified WBE 1042

## Columbia Pacific Chapter 54

### Upcoming Events

#### October Program

More details page 3.

#### Check out other Construction Industry Related Organizations:

ASPE groups on LinkedIn.com  
<https://www.linkedin.com/company/american-society-of-professional-estimators>

A/E/C Industry on LinkedIn.com  
<https://www.linkedin.com/groups/46976/profile>

AACE Cascade - [www.aacei-cascade.org/](http://www.aacei-cascade.org/)

CSI Portland - [www.portland.csinet.org/](http://www.portland.csinet.org/)

NAWIC <http://www.nawicportland54.org/>

ASHRAE <http://www.orashrae.org/>

### Volume 17 | Issue 10 | October 2017

#### IN THIS EDITION OF THE RECAP

Chapter Message - President	p 2
Program - PDX Concourse E	p 3
NAWIC Brewfest	p 5
Why Become a Member	p 7



From The President

Can you believe it? Fall is already here. School is back in session. The leaves are changing colors. The weather is getting a little colder. Fortunately, construction in our area is still red hot with no signs of slowing down anytime soon. It is a great time to work and live in this market.

I am happy to share with all of you my experience at the 2017 National Summit that I attended in Denver. What a great experience again. The Denver chapter was fantastic in hosting this three-day event. There were some of the best speakers I have ever had the pleasure of listening to. The event started with Niel Nicholaisen. Niel's topic was on "Accelerating Transformation", which included items such as cleaning up legacy messes and changing how we all learn or unleashing your teams. He recommended that we all view a couple of YouTube videos. First video is from Simon Senik called "Why" (<https://www.youtube.com/watch?v=IPYeClTpxw>) and the second is from Dan Pink called "Drive" (<https://www.youtube.com/watch?v=u6XAPnuFjC>). I feel

everyone can take something from either of these videos.

Another speaker was Betsy Allen-Manning. Her discussion was on Leadership and how we as leaders need to find out what kind of personality we each have, as well as our team that we work with. This was another great presentation. A couple of great quotes that came from her were "Do you want to accomplish a task or build a relationship", and "The overuse of your greatest strength can be your greatest weakness". These are just two examples of the types of speakers that ASPE National brings to the annual meetings.

If you are a current CPE, you can get a majority of your required professional development units (PDUs) at this summit. If you are not a CPE, it is still worth attending featured speakers and interaction with other estimators from all over the country.

In closing, we are looking forward this month to having David Standley with

*continued page 4*

Columbia Pacific Chapter 54

Officers and Chairs

Columbia Pacific 2017

**President**

Craig Welburn, E  
503.566.5617 cwelburn@cherrycityelectric.com

**First Vice President/Membership**

Carey Lee  
360.949.6974 clee@sunsteellc.com

**Second Vice President/Programs**

Jared Carkin  
503.209.6048 jaredc@hydrotempmech.com

**Secretary**

Mike Flynn, CPE  
971.279.5002 mikeflynn1730@comcast.net

**Treasurer**

Robert Rivera, C  
503.846.7849 riverarobr@yahoo.com

**Certification/NW Recap Editor**

Chana Frederick, CPE  
971.832.3944 frederick.chana@gmail.com

**Publisher**

Morgan Hegarty  
971.713.2533 morganh@yorkeandcurtis.com

**Directors**

Jared Carkin  
503.209.6048 JaredC@hydrotempmech.com

**~New Chapter Address~**

**PO Box 19886  
Portland, OR 97280  
aspechapt54@gmail.com  
971-832-3944**

WHITAKER/ELLIS

YOUR CONCRETE CONTRACTOR

CCB# 124833

**WE**

7180 SW Sandburg St., Suite 400 • Tigard, OR 97223  
Phone: (503) 768-3017 • Fax: (503) 768-3018  
Website: www.whitakerellis.com



ASPE October Program

*Portland International Airport Concourse "E" Expansion*



The project entails a 152,000-SF, 830'-long two-story expansion of Concourse E, including the addition of six new gates. The scope also includes airside sitework, modifications to baggage handling systems, and renovations within the existing terminal. Structural Steel and Piling are anticipated to bid in November, the remaining bid packages will be issued in early 2018.

Join us to learn a little of the project's history, get a preview of some of the features of the new concourse, and learn about the project's bidding and construction schedule.

Featuring David Standley, Skanska USA Building

**When:** Tuesday, October 17, 2017

Social Time – 5:30 PM • Dinner & Program – 6:15 PM

This educational program qualifies for 1 CED hour for Oregon CCB license renewal

**Where:** University Place • 310 SW Lincoln St, Portland

<http://www.uplacehotel.com/> (for directions)

Free parking - go to any of the pay stations and type in the **\*\*pass code 19903\*\***

Must provide your vehicle license plate at pay station also

**Meeting Cost:** \$35.00 with reservation & credit card payment

Reservation failure to show will result in donation to ASPE54 in \$35 (pre-paid) or \$60 (not pre-paid)

Ask about Special Student Rates

**Register:** <http://aspe54.org> or click on October Program Meeting on our site

**Registration Closes:** 12:00 PM, October 16, 2017



### From The President continued

Skanska come and speak on October 17th regarding the Concourse Expansion at PDX. We look forward to hearing about this exciting project. I hope you all will join us this month, and as always, please spread the word of ASPE to as many people in our industry as you can. The only way to maintain a strong, local chapter is by maintaining and increasing our membership.

See you on the 17th!

Craig Welburn  
ASPE Chapter 54 President



## KIMAX® Glass Drain and Vent Systems

- Low volatile organic compounds (VOCs)
- Will not burn or emit toxic fumes
- Maximum corrosion resistance
- Flexibility, adaptability, modularity
- Safe and simple installation
- Lowest life-cycle costs

Tubing  
SCHOTT North America, Inc  
555 Taxter Road  
Elmsford, NY 10523  
Phone: +1 (914) 831-2200  
info.drainline@us.schott.com  
www.us.schott.com/drainline

**SCHOTT**  
glass made of ideas



### NAWIC Brewfest

The National Association for Women in Construction is holding their 9th Annual Brewfest & Silent Auction. There will be beer, food, brewery tours, and a silent auction.

Please see the flyer below for more information, such as ticket prices and location.

**October 19<sup>th</sup> 2017**  
6:00 pm.

Tickets  
\$65 Before October 13th  
\$75 after the 13th and at the door

206 SW Morrison St., Portland, OR 97204

**NAWIC BREWFEST & SILENT AUCTION**  
Ninth Annual

HOSTED BY NAWIC CHAPTER #54

Ticket includes a punch card for the beer/food pairing stations, drink ticket, and a brewery tour of Rock Bottom Brewery.

FOR TICKETS AND INFO PLEASE VISIT:  
[www.nawicbrewfest2017.eventbrite.com](http://www.nawicbrewfest2017.eventbrite.com)  
For Questions, Cash/Check Registration and Event Sponsorship  
Contact Lauren Holmes  
503.869.7933 or [Lauren.Holmes@lewisbuilds.com](mailto:Lauren.Holmes@lewisbuilds.com)

**YC** Building excellence in the Northwest since 1988

**Yorke & Curtis**  
503.646.2123  
[www.yorkeandcurtis.com](http://www.yorkeandcurtis.com)

**MADDEN FABRICATION**

2550 NW 25th Place • Portland, Oregon 97210  
**Custom Metal Fabrication and Welding**  
Greg Madden President Office (503) 226-3968  
E-mail: [gmadden@madfab.com](mailto:gmadden@madfab.com) Fax (503) 242-2446  
Toll Free 1 (877) 902-6424

**Madden Industrial Craftsmen, Inc.**  
**Contact: Ken Madden**  
**1-800-308-6424**

- Premier staffing service specializing in manufacturing and construction temporary staffing.
- Recognized leader in the Portland/Vancouver market for over 15 years... we're here to stay.
- Recipient of Austin Family Business Award; recognized in 2003 as one of Oregon's "Top 100 Best Companies to Work For".
- We're on your side! Give us a call to see how we can help.

**"Let MICI Do It"**

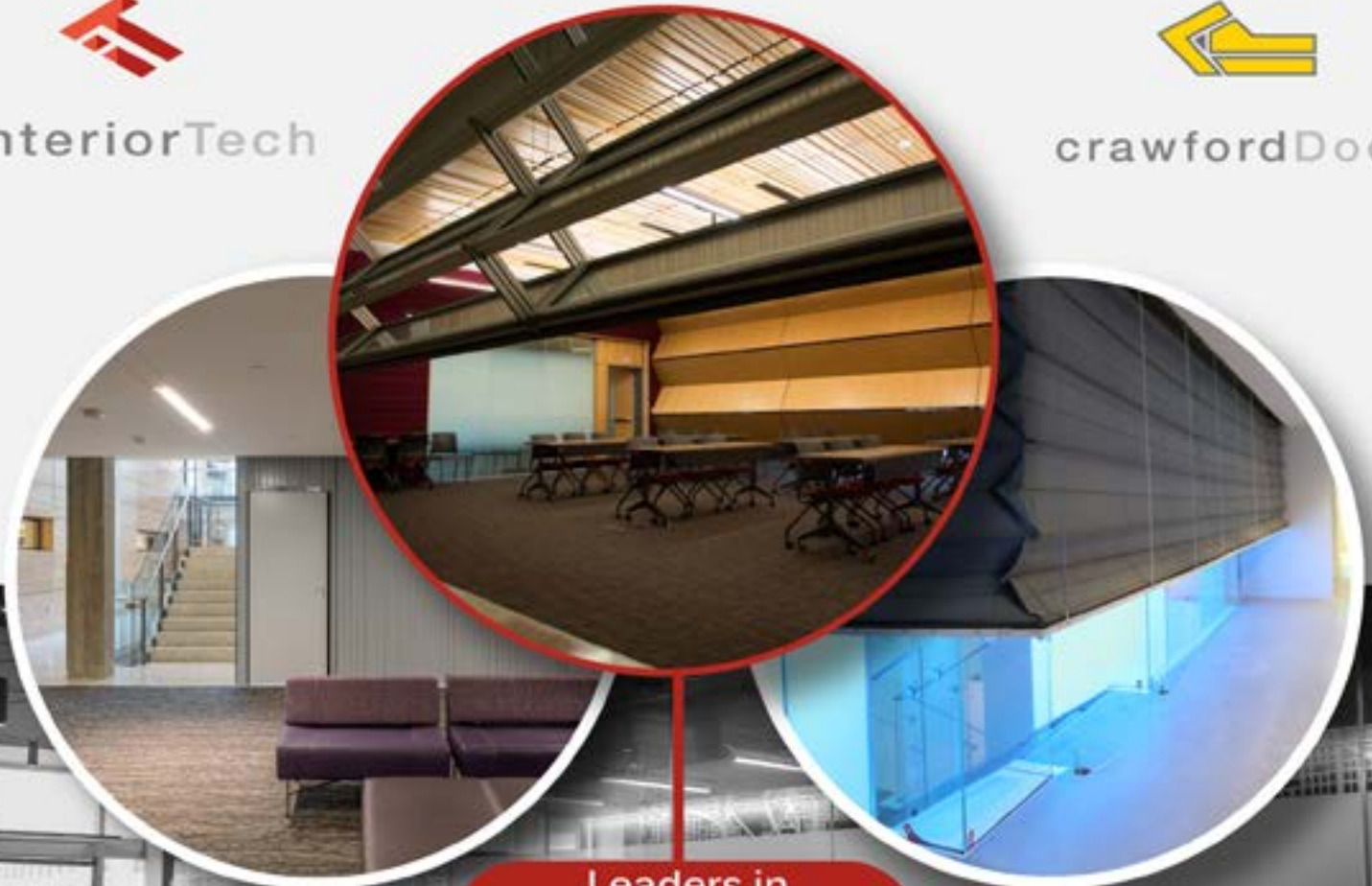




interiorTech



crawfordDoor



Leaders in  
Design Assistance

Serving Oregon  
& Washington  
since 1947

*Interior Tech is a building specialty contractor with a focus on fire/smoke/egress design, daylighting solutions, acoustic operable partitions, space division alternatives, and security doors & grilles. We provide design & budget assistance, specifications, design details, installation, and technical support.*

*Serving the Pacific Northwest since 1947, we are dedicated to providing our customers with top of the line products and unbeatable customer service.*

toll free: (877) 643-9491  
[washingtonsales@interior-tech.com](mailto:washingtonsales@interior-tech.com)  
[oregonsales@interior-tech.com](mailto:oregonsales@interior-tech.com)  
[www.interior-tech.com](http://www.interior-tech.com)



Why Become a Member

Industry Recognition & Career Enhancement:

- National recognition of Certification Program for Certified Professional Estimators – Accredited by CESB.
- National, Regional, and Affiliated Estimating Academies
- Leadership opportunities & training
- Partnerships with other major industry associations & builders exchanges
- Online Directory for members only

Cost Savings Partners:

- Davis-Bacon Wage Rates-- Look up all 50 States. Free online service from BNI.
- Firestone Complete Auto Care and Affiliates: Offers exclusive savings
- Lenovo: 20% Discounts on notebooks, tablets, laptops, accessories and more.
- A-merican Income Life: \$2,000 Accidental Death and other great discounts.
- ASPE's official digital publication - Estimating Today – monthly

Publications Discounted:

- Craftsman Books discounted for ASPE members.

- Free subscription to Design Cost Data Magazine.
- Subscribe to Engineering News Report (ENR) save 54% off regular rate.
- Architectural Record and GreenSource - The McGraw-Hill companies.
- Walker's Technical Books – 20% off.
- ConsensusDocs

Other Benefits:

- ProEst Software, offer all current ASPE members a discounted ProEst Estimating software and training Package. ProEst Estimating Lite is an estimating and digital takeoff tool that allows estimators to perform quantity measurements using digital plans and a mouse.
- Special rate for ASPE members on the National Historic Building Cost Database from DCD Magazine
- PipelineSuite bid invitation and online plan room software: 20% Discount off the set-up fee for ASPE members.
- Discount on ConstructionWork.com Projects Search Service
- Construction Estimating Institute (CEI) offers a 20% discount on curriculum materials and course fees for ASPE members. Log into members only section for details.
- CPE Stamp & Seal Program. Must be a current ASPE member and CPE.



Carey Lee

Regional Sales Manager      clee@sunsteellc.com  
 312 SE Stonemill Dr., Ste 147  
 Vancouver, WA 98684

Office 360.329.7048 • Direct 360.419.5596 • Cell 360.949.6974